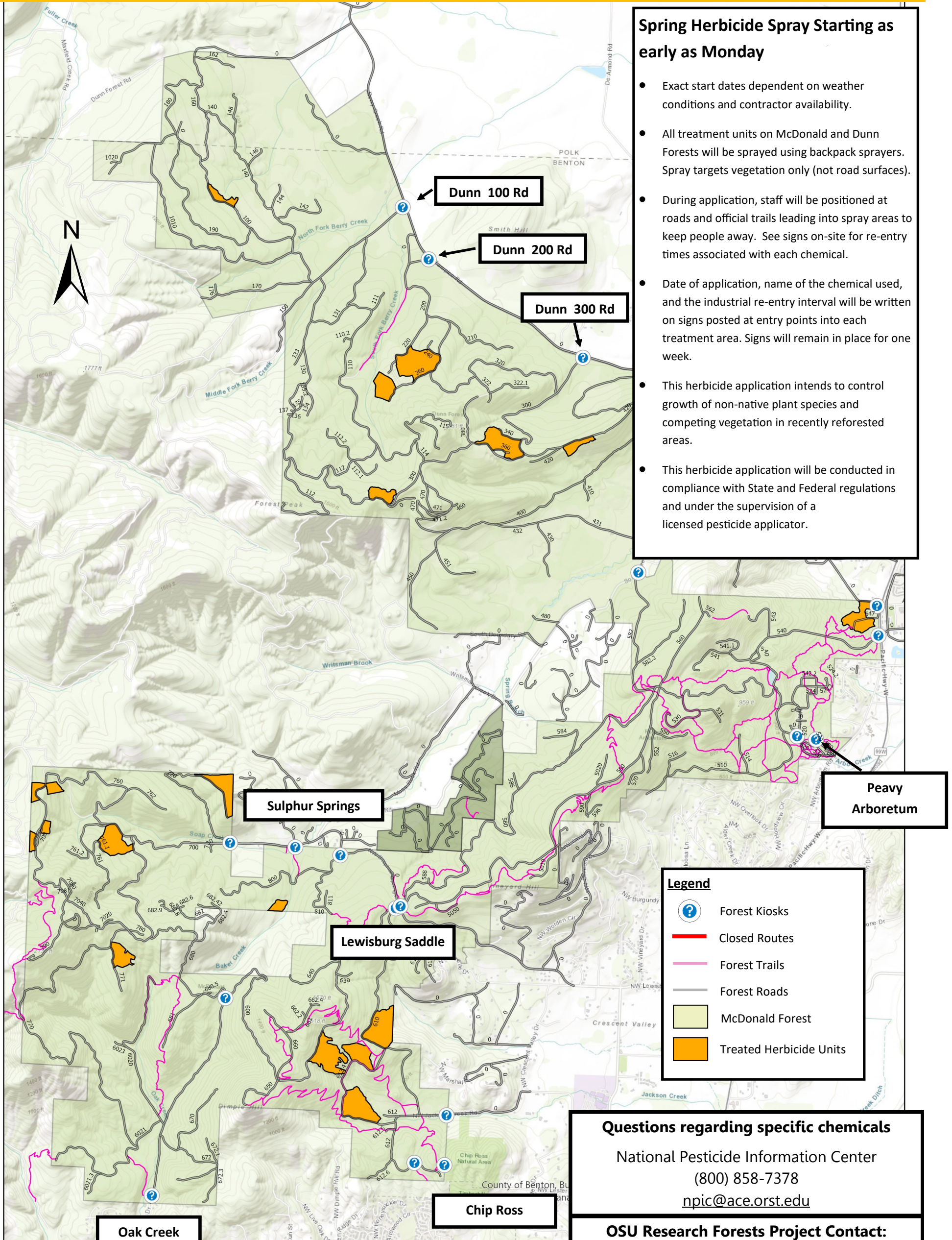


OSU Research Forests 2021

Spring Herbicide Spray



Spring Herbicide Spray Starting as early as Monday

- Exact start dates dependent on weather conditions and contractor availability.
- All treatment units on McDonald and Dunn Forests will be sprayed using backpack sprayers. Spray targets vegetation only (not road surfaces).
- During application, staff will be positioned at roads and official trails leading into spray areas to keep people away. See signs on-site for re-entry times associated with each chemical.
- Date of application, name of the chemical used, and the industrial re-entry interval will be written on signs posted at entry points into each treatment area. Signs will remain in place for one week.
- This herbicide application intends to control growth of non-native plant species and competing vegetation in recently reforested areas.
- This herbicide application will be conducted in compliance with State and Federal regulations and under the supervision of a licensed pesticide applicator.

Legend

- Forest Kiosks
- Closed Routes
- Forest Trails
- Forest Roads
- McDonald Forest
- Treated Herbicide Units

Questions regarding specific chemicals
 National Pesticide Information Center
 (800) 858-7378
npic@ace.orst.edu

OSU Research Forests Project Contact:
 Reforestation Manager
 (541) 737-4924
<https://cf.forestry.oregonstate.edu/contact-us>